



March 2007

Newsletter

ELI Academics —
TOEFL scores raised 50-100pts!



ELI students who took the Institutional TOEFL in February raised their TOEFL scores on an average of almost 50 pts within 6 weeks or less. Some students increased their TOEFL scores by almost 100pts.

Pam Palmer, ELI Academic Coordinator, credits their success and achievement to the rigorous reading and grammar courses we offer in combination with the IBT TOEFL and intensified preparation course. **Well done, students and teachers!**

ELI Activities —
Students produce TV show!



This month students learned how to produce a TV show in our state of the art TV studio. They wrote a TV script, acted in the shows and used our video studio and cameras to tape the program that they made. This enabled them to learn how a TV studio works and practice English in a fun, interactive environment. Stay tuned to hear more about the shows they produced!



Students enjoying International night with Activities Coordinator, Steve Donovan

ELI Activities—
More Festive Activities!



International Night is celebrated to honor a different culture each month. In March, students celebrated the festive holiday of St. Patrick's Day by tasting traditional foods, listening to Irish music and learning about the Irish heritage in Boston.

Other activities included: skating at Boston Commons, spring skiing in New Hampshire, attending the play *Oliver Twist* in Harvard Square and visiting the new Institute of Contemporary Art. The college hosted a Casino night where students won many prizes such as DVD's and cameras.

Led by our dynamic Activities Coordinator, Steve Donovan, students enjoyed fun filled activities to take a break from their challenging studies and visited the many cultural and historical sites that Boston has to offer!

ELI student attends PMC!

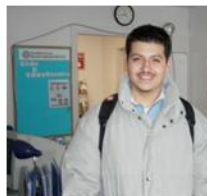


Janna Spinazola, PMC Director of Student Recruitment (left) and Amber Mustaq, ELI Student, Pakistan

Amber Mustaq, ELI student from Pakistan will attend PMC in September 2007. She will major in international business. Amber studied political science at the University of Karachi and is the first woman in her family to attend a university. She has worked hard to improve her English proficiency and increase her TOEFL score.

Congratulations on a great accomplishment, Amber!

What students say about ELI.....



My Experience in Pine Manor College ELI has been incredible because I could not speak English when I came in August, and now I

plan to attend a university in the US. I have made many international friends, learned new skills and have experienced a whole new world...

Daniel Dominguez, Mexico



It is like a family here everyone is so supportive, caring and friendly we don't want to leave!
Areum Kim, Korea, (left)
Lin, Yi-Chin, Taiwan